

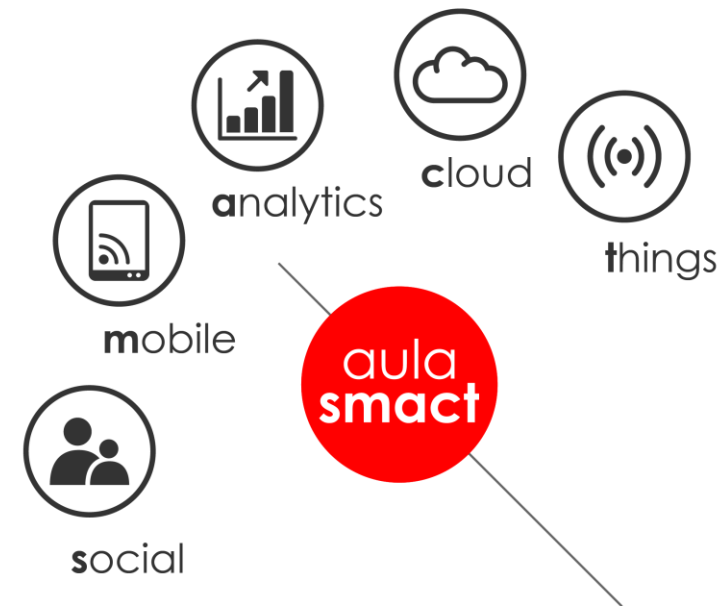


# Oracle Data Integrator *avanttic*\_day

Francisco Parreño

*B.A. Consultant*

29/11/2019



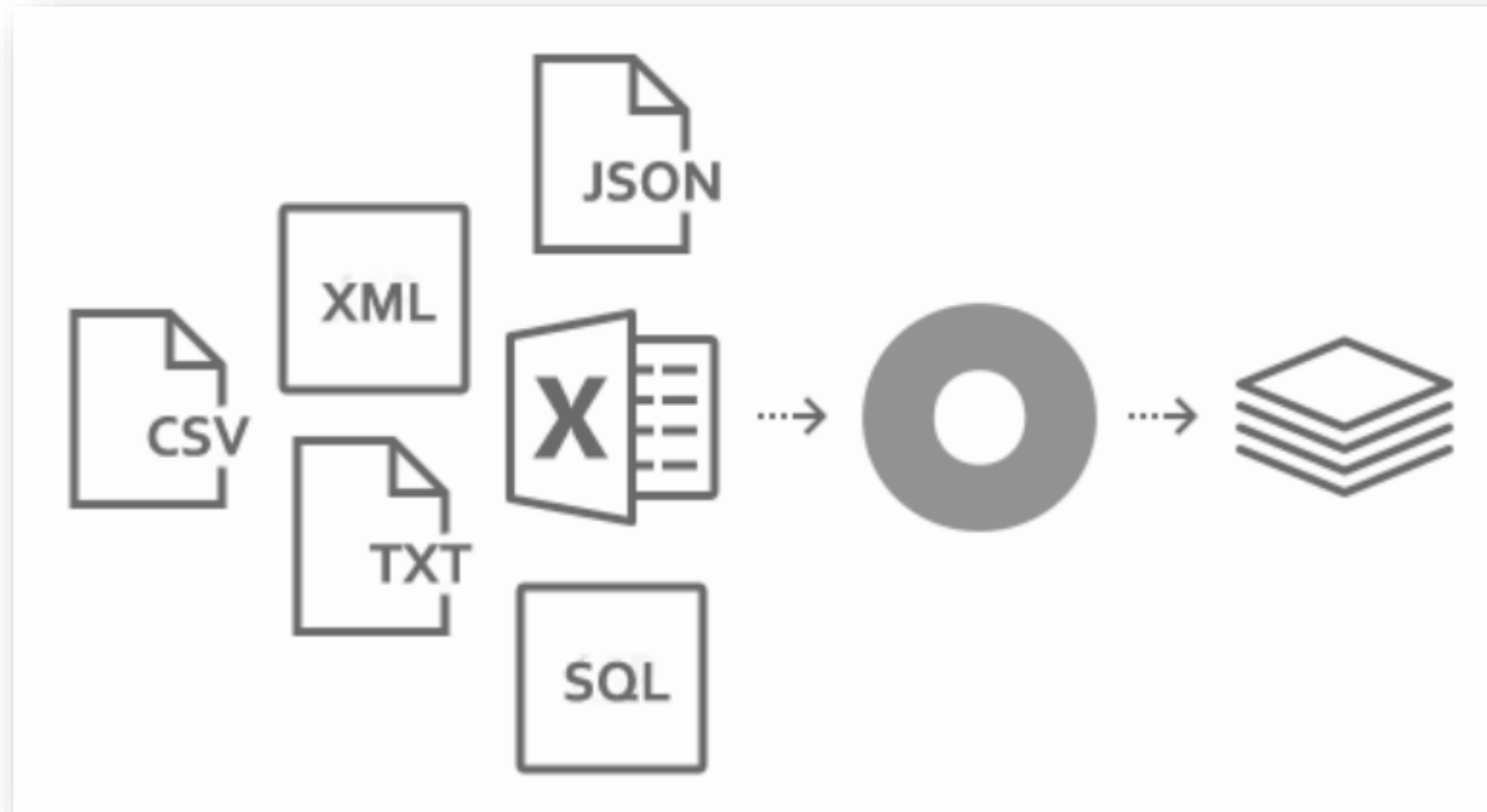
- ¿Qué es la integración de datos?
- ¿Qué herramientas se usan para la integración de datos?
- ¿Qué es Oracle Data Integrator (ODI)?
- ETL vs E-LT
- ODI: Desarrollo Declarativo
- ODI: Big Data
- Ejemplo de un flujo de información de ODI

# | ¿Qué es la integración de datos?

---

*avanttic*\_day

# ¿Qué es la integración de datos?



| ¿Qué herramientas se usan para la integración de datos?

---

*avanttic*\_day

# ¿Qué herramientas se usan para la integración de datos?

Figure 1. Magic Quadrant for Data Integration Tools



Source: Gartner (August 2019)

# | ¿Qué es Oracle Data Integrator (ODI)?

---

*avanttic*\_day

# ¿Qué es Oracle Data Integrator (ODI)?

---

*“Oracle Data Integrator es una plataforma de integración de datos completa que cubre todos los requisitos de integración de datos: desde cargas por lotes de alto volumen y alto rendimiento para servicios de datos compatibles con SOA (Arquitectura Orientada a Servicios), así como procesos de integración de flujos de negocios basados en eventos”.*

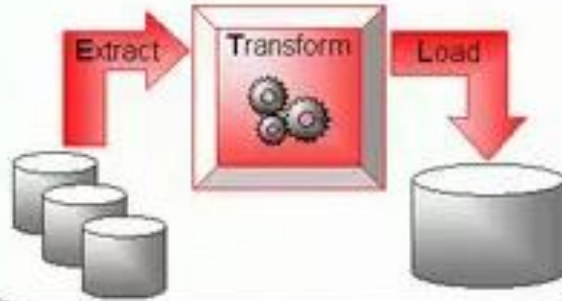


## | ETL vs E-LT

---

*avanttic*\_day

## Conventional ETL Architecture



## Transform in Separate ETL Server

- Proprietary Engine
- Poor Performance
- High Costs
- IBM & Informatica's approach

## Next Generation Architecture

### “E-LT”



## Transform in Existing RDBMS

- Leverage Resources
- Efficient
- High Performance

### Benefits

- Optimal Performance & Scalability
- Easier to Manage & Lower Cost

# | ODI: Desarrollo Declarativo

---

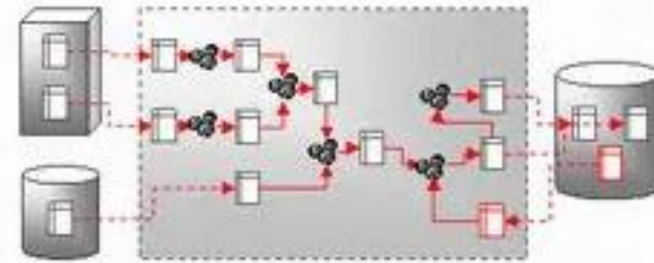
*avanttic*\_day

## Declarative Design Developer Productivity

### Conventional Design: Specify Data Flow Graph

- Define every step of complex ETL flow logic
- Require specialized ETL skills and significant development/maintenance efforts

### Conventional ETL Design



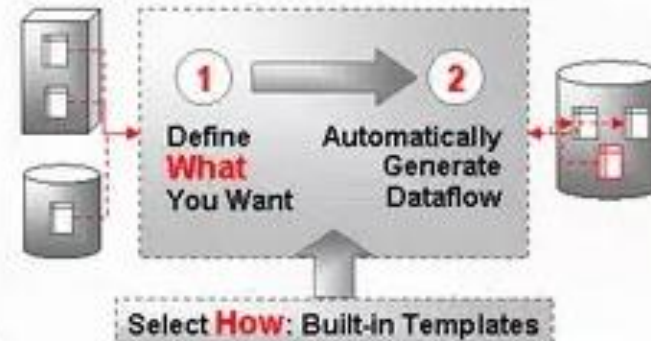
### Declarative Set-based Design

- Simplifies the number of steps
- Automatically generates the data flow

### Benefits

- Reduced the learning curve
- Shorter implementation times

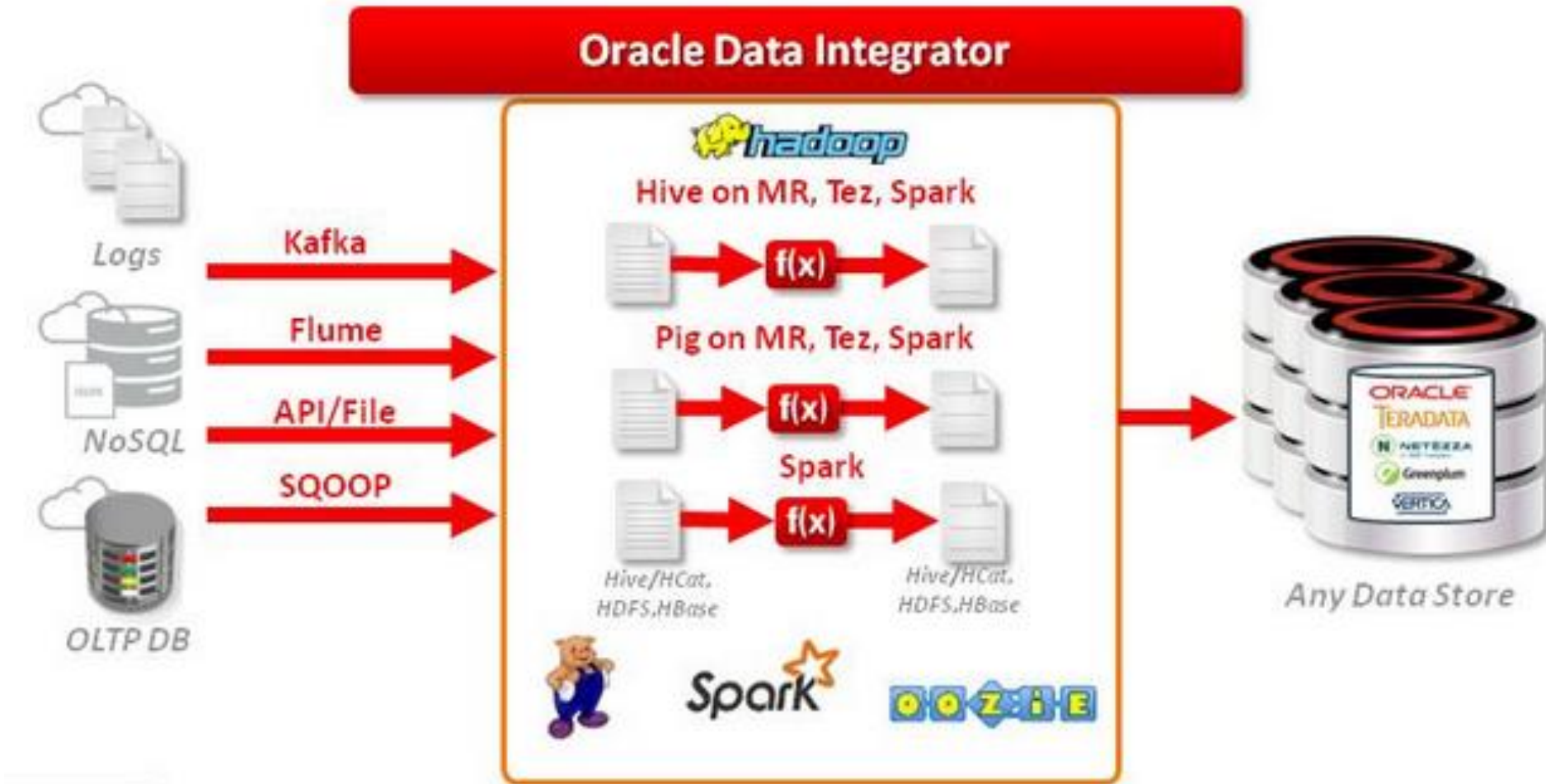
### ODI Declarative Design



# | ODI: Big Data

---

*avanttic*\_day

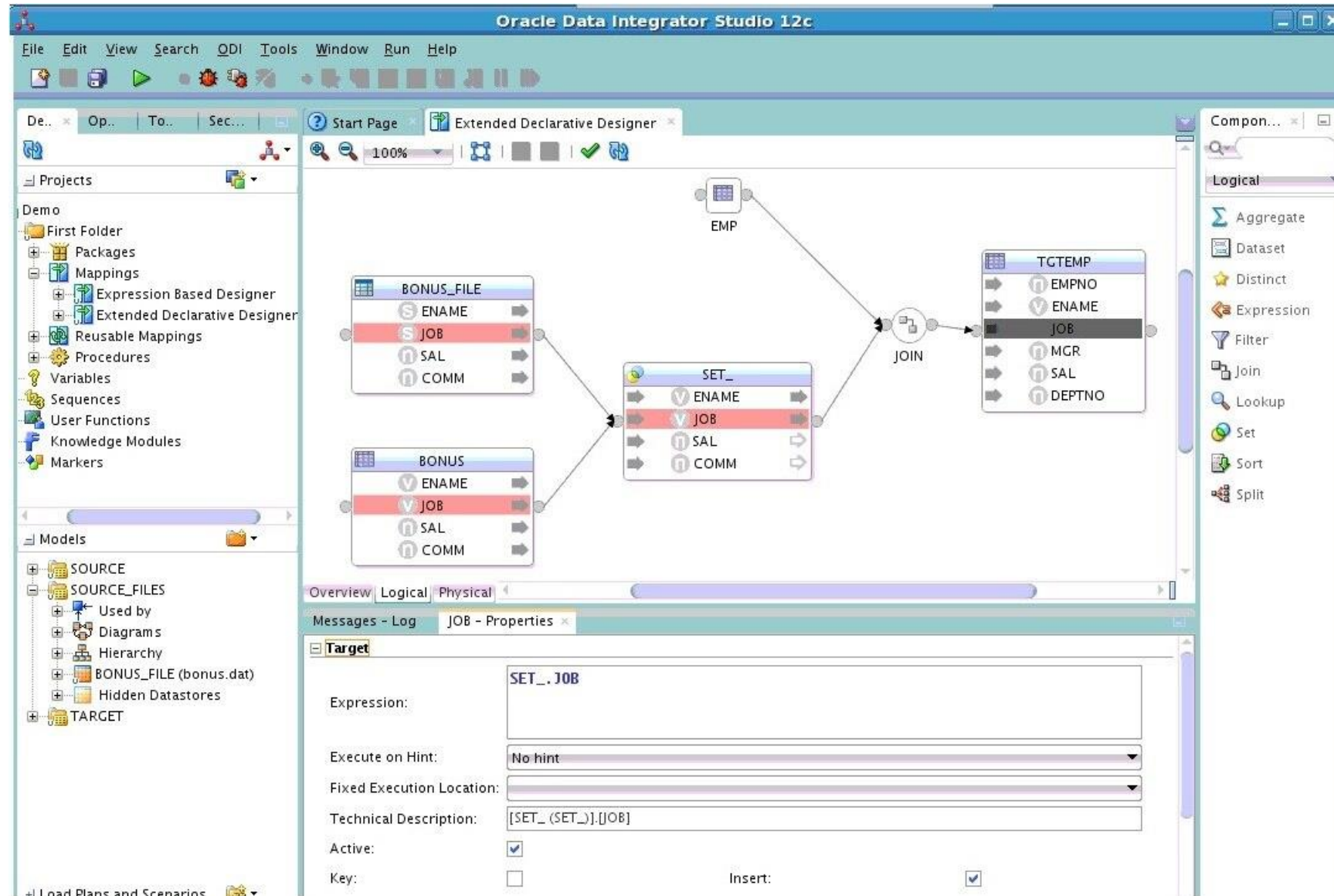


# | Ejemplo de un flujo de información de ODI

---

*avanttic*\_day

# Ejemplo de un flujo de información de ODI





# Ejemplo de un flujo de información de ODI

Oracle Data Integrator Studio 12c

File Edit View Search ODI Tools Window Run Help

De... Op... To... Sec...

Start Page Extended Declarative Design

100%

SOURCE\_GROUP TARGET\_GROUP

SOURCE\_UNIT TARGET\_UNIT

BONUS BONUS\_A

SOURCE\_FILES\_UNIT BONUS\_FI

BONUS\_FILE EMP

JOIN TCTEMP

Extended Declarative Design\_DS

Overview Logical Physical

Messages - Log Multiple Objects (2) - Properties

Map Physical Node (2)

Map Physical Node (2):

Name	Description	LKM	Logical Component	Logical Connector ...
BONUS_AP		LKM Oracle to Oracle Pull (DB Link)	SET_	SET_INPUT2
BONUS_FILE_AP		LKM File to Oracle (EXTERNAL TABLE)	SET_	SET_INPUT1

# Ejemplo de un flujo de información de ODI

The screenshot displays the Oracle Data Integrator Studio 12c interface. The main workspace shows a data flow diagram with the following components:

- SOURCE\_GROUP**: Contains **SOURCE\_UNIT** (with **BONUS**) and **SOURCE\_FILES\_UNIT** (with **BONUS\_FILE**).
- TARGET\_GROUP**: Contains **TARGET\_UNIT** (with **BONUS\_A**, **BONUS\_FI**, **EMP**, **SET\_**, **JOIN**, and **TGTEMP**).

The flow is as follows: **BONUS** and **BONUS\_FILE** feed into **BONUS\_A** and **BONUS\_FI** respectively. **BONUS\_A** and **BONUS\_FI** feed into **SET\_**. **EMP** also feeds into **SET\_**. **SET\_** feeds into **JOIN**, which then feeds into **TGTEMP**.

The bottom right panel shows the **Integration Knowledge Module** properties for **IKM Oracle Insert.GLOBAL**. The style is **Component-style**. The options table is as follows:

Options	Description
Name	Value
INSERT_HINT	APPEND,PARALLEL
SELECT_HINT	
CREATE_TARGET_TABLE	False
TRUNCATE_TARGET_TABLE	False
DELETE_ALL	False

# *avanttic* el partner



**Francisco Parreño**

*B.A. Consultant*

---

francisco.parreno@avanttic.com

673 482 787



empowering future **ORACLE** professionals